

- **Powerful**

Its kinematic principle (Tranchero Patent) allows an almost 3m vertical lifting with a load of three tons.

- **Precise**

2 speeds (fast and slow) for each movement (forward/reverse, lifting, telescoping).

- **Sturdy**

The main jack is included in the structure and the telescope jack is completely integrated into the jib.

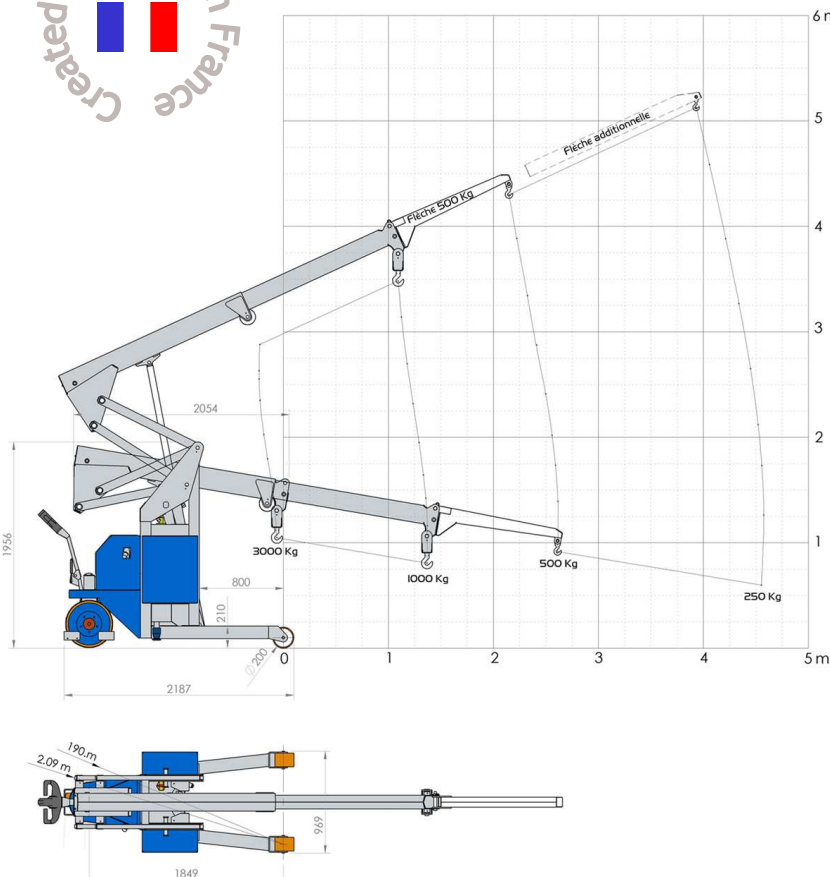
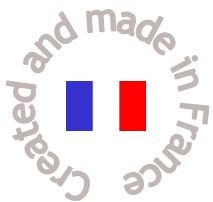
The telescope, assembled on wheels, will not suffer any rubbing.

- **Multi task/adaptable**

Its programmable controller allows integrating different options (additional hydraulic jib, winches...).

- **Non polluting and self-sufficient**

Thanks to its 24V traction batteries and its integrated charger.



Technical specifications

Maxi load	3000 kg
Weight (crane unloaded)	1800 kg
Admissible slope(crane unloaded).....	18 %
Maxi translation speed	3 km/h
Lifting speed adjustable from 0 to	15 cm/s
Telescoping speed adjustable from 0 to	13 cm/s
Batteries	24V - 460 Ah
Engine 24V dc	3 kW

Series equipments

- Anti-tilt system
- Hydraulic wheel drive
- Hydraulic automatic braking system
- Automatic parking brake
- Integrated battery charger
- 2 axes wired remote control (lifting and telescope) with potentiometer to adjust speed

Main options

- Additional jib 500 kg
- Additional jib with manual telescope 500/350 kg
- Additional jib with manual telescope 350/250 kg
- Additional hydraulic jib
- Winches 1000kg and 500kg
- Plate with lateral tipping