

⇒ powerful

Its kinematics principle allows an almost vertical lifting of three meters with a load of three tons.

⇒ precise

Its three hydraulic movements (translation, raising, telescope) all have a fast speed and a slow speed.

⇒ robust

The main jack is included in the structure and the telescope jack is completely integrated in the jib.

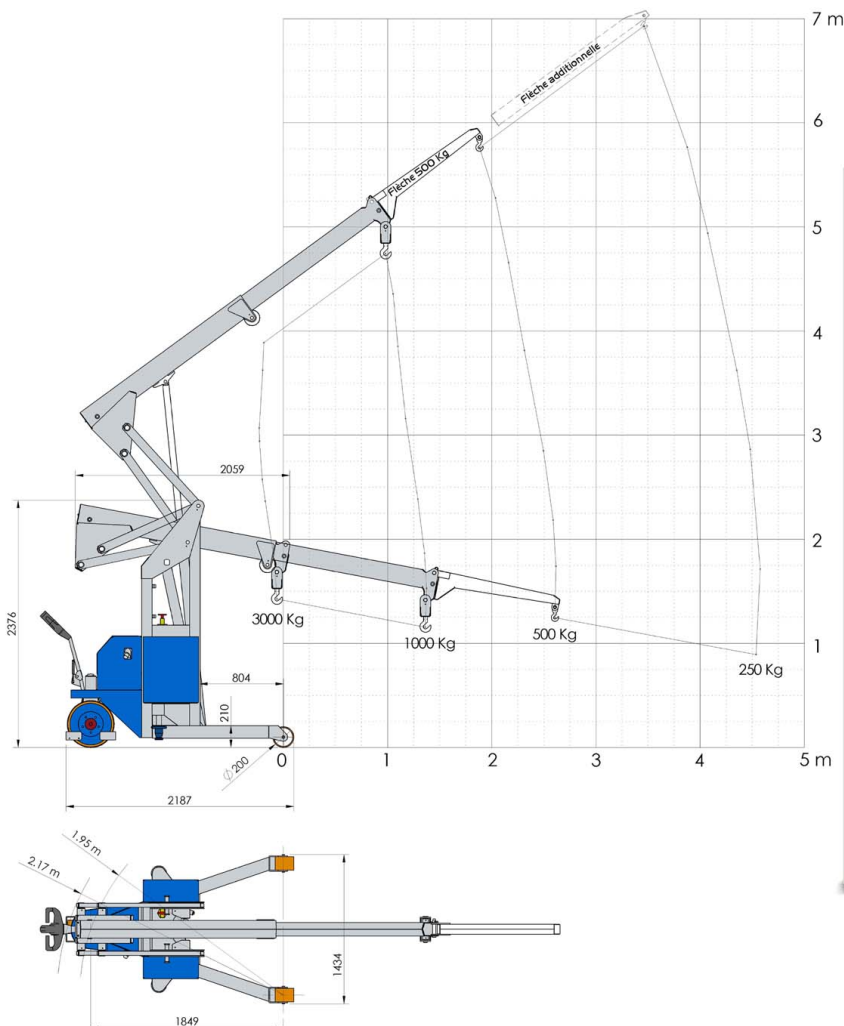
The telescope, assembled on wheels, is not subjected to rubbing.

⇒ polyvalent

Its programmable automaton permit to integrate numerous tools (prehensibles, winches).

⇒ non polluting and self-sufficient

According to its traction batteries 24 V and its integrated charger.



Technical specifications

Maxi load	3000 kg
Unladen weight	1800 kg
Unladen admissible slope	18%
Maxi translation speed	3 km/h
Lifting speed adjustable from 0 to	15 cm/s
Telescoping speed adjustable from 0 to	13 cm/s
Batteries 24V	400Ah
Engine 24 V CC	3 kW

Series equipment

2 axes remote control (Lifting and Telescope)

Principales options

Terminal jib 500 kg
Manual telescope 500/350 kg
Manual telescope 350/250 kg